

Jewellery
by
Brian Dodds

Designs

Brian Dodds was born in New Zealand in 1949. He began making jewellery at the age of 16, then later studied design in Sydney, Australia. By 25 years of age he had already worked in interior design, had been a photographer in the Vietnam war, and had worked in the design studio of the British Leyland car company. His passion however always remained with jewellery.

Being dissatisfied that design ideas always seemed to revolve around standard jewellery making techniques, he decided to travel widely studying various traditional styles in many countries. Later he settled in Japan and made a name as a jewellery artist making collection pieces for jewellery companies, galleries and private clients. A health condition brought him back to New Zealand in 1987 leading to extensive research into natural medicine and healing.

In 2012 a desire arose to pick up the jewellery tools again.

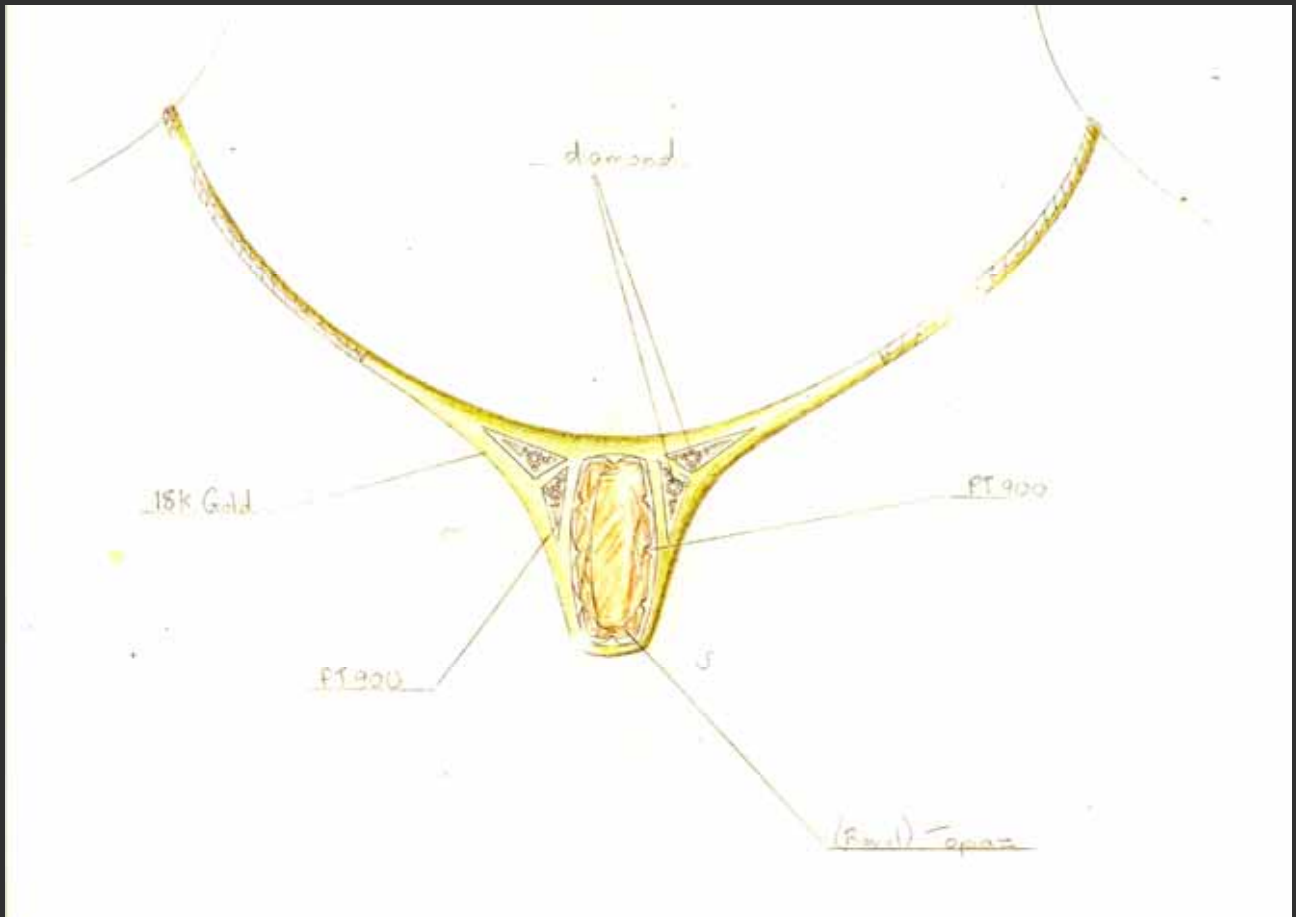
The following is a selection of pieces.

Artists message

Exquisite jewellery must achieve a sensitive balance between the natural beauty of the gems, the expression of the artist, and the clients desires. That balance is the essence that I strive for in all my jewellery.

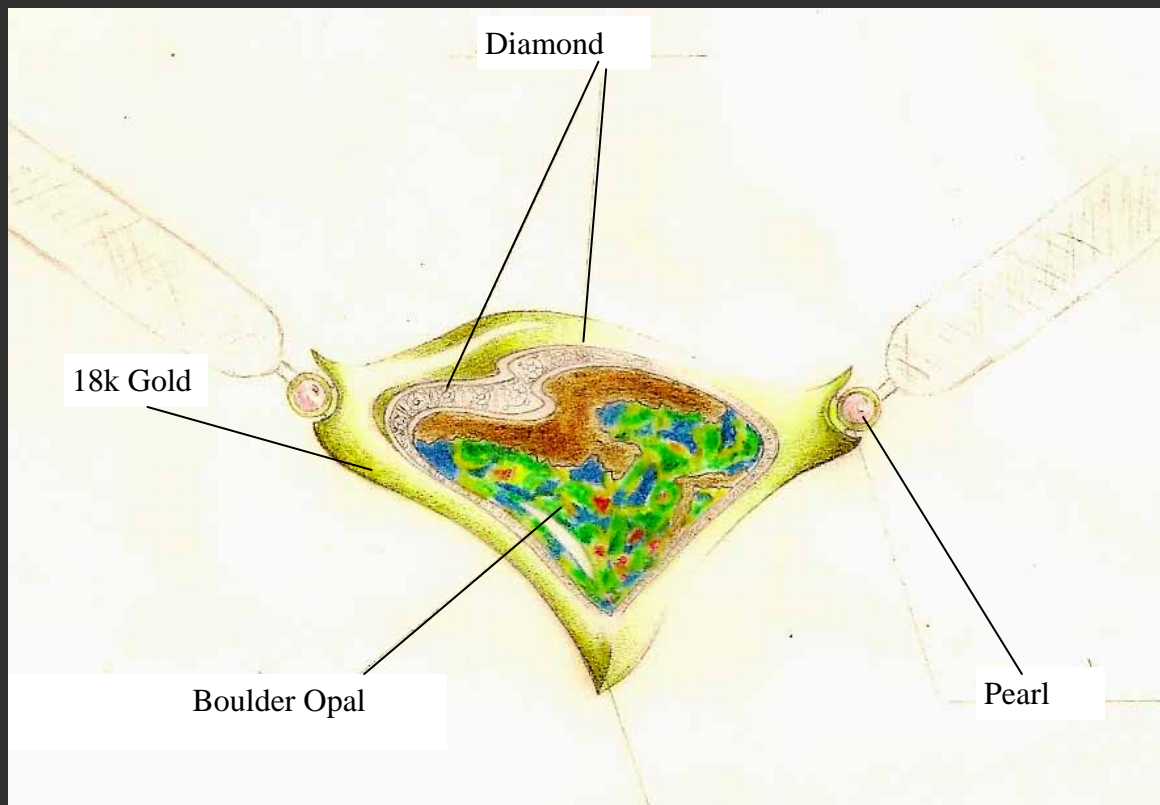
Brian Dodds





PENDANT :
Imperial Topaz. 18k gold, Platinum 900, Diamond
Commissioned by the German Ambassador,
Kobe, Japan as present for his wife

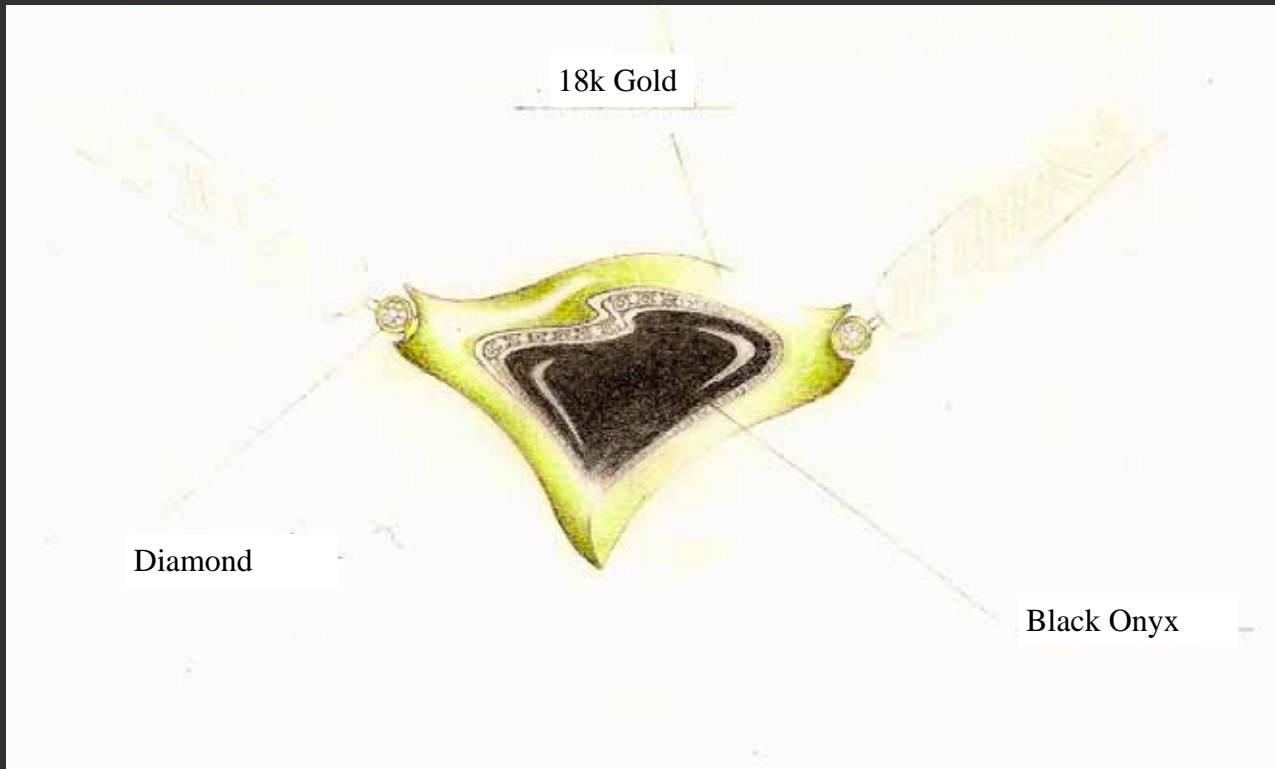




*Man`s KIMONO OBIE CLASP (reversible)
Boulder Opal, Pearl, 18K Gold., 900 Platinum, diamond*

*Commissioned by Leading Japanese Kimono designer to
wear at his exhibition opening.*



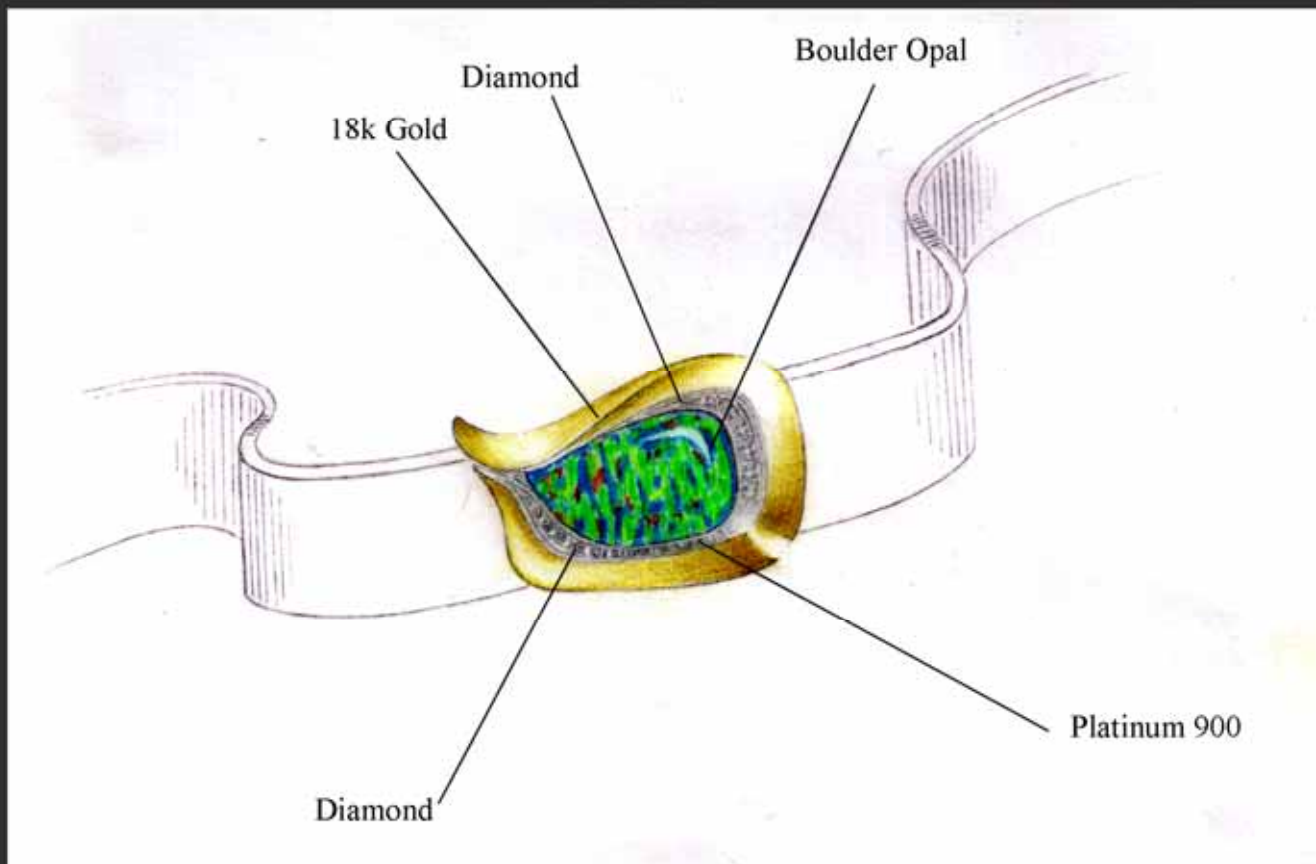


*Man`s KIMONO OBIE CLASP (reversible)
Boulder Opal, Pearl, 18K Gold., 900 Platinum, diamond*

*Commissioned by Leading Japanese Kimono designer to
wear at his exhibition opening.*

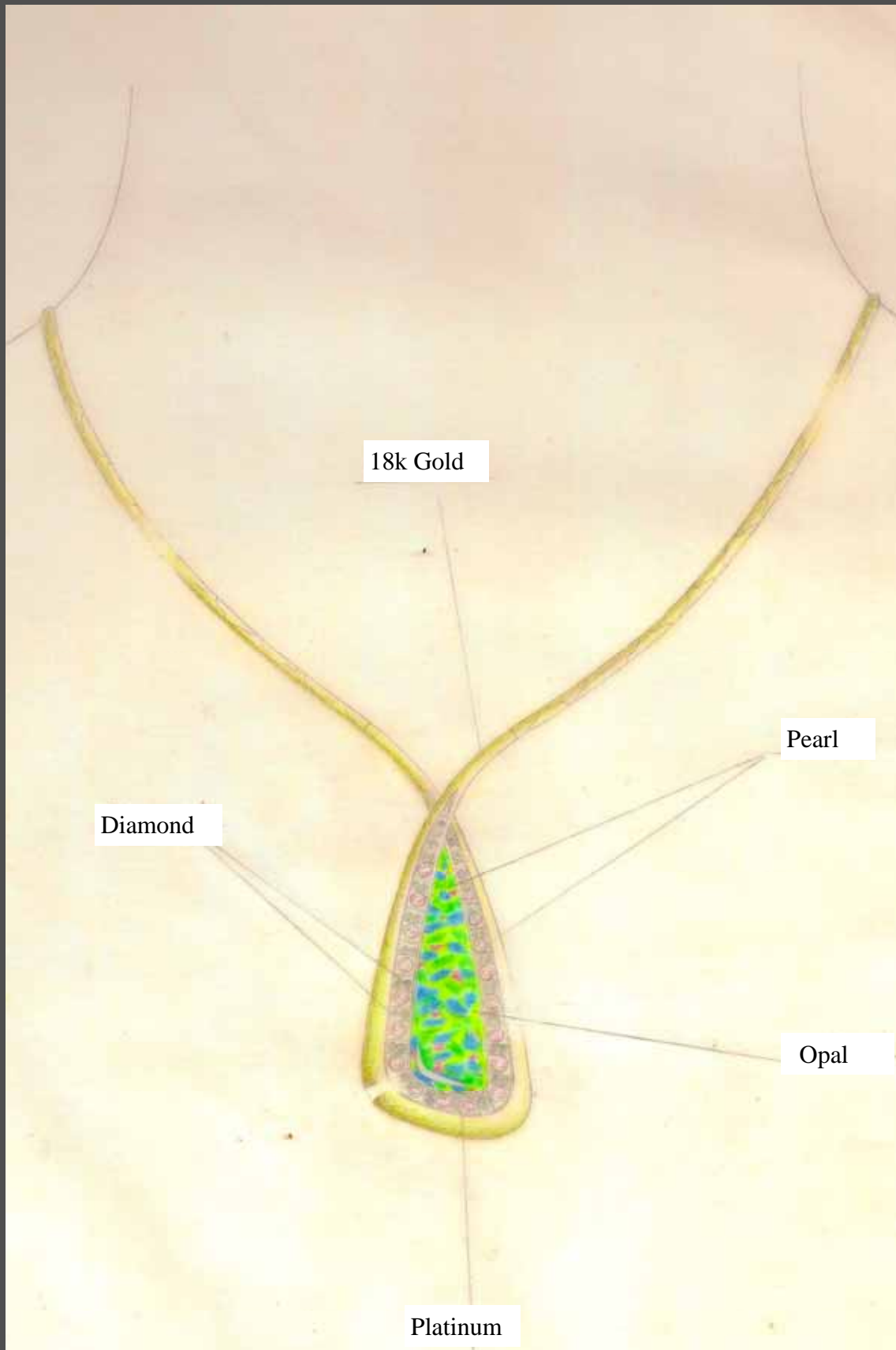






KIMONO OBIE CLASP
Boulder Opal, 18K Gold., 900 Platinum, diamond
Ordered by Terauchi Ltd, leading
Japanese Jewellery shop Kyoto, Japan.

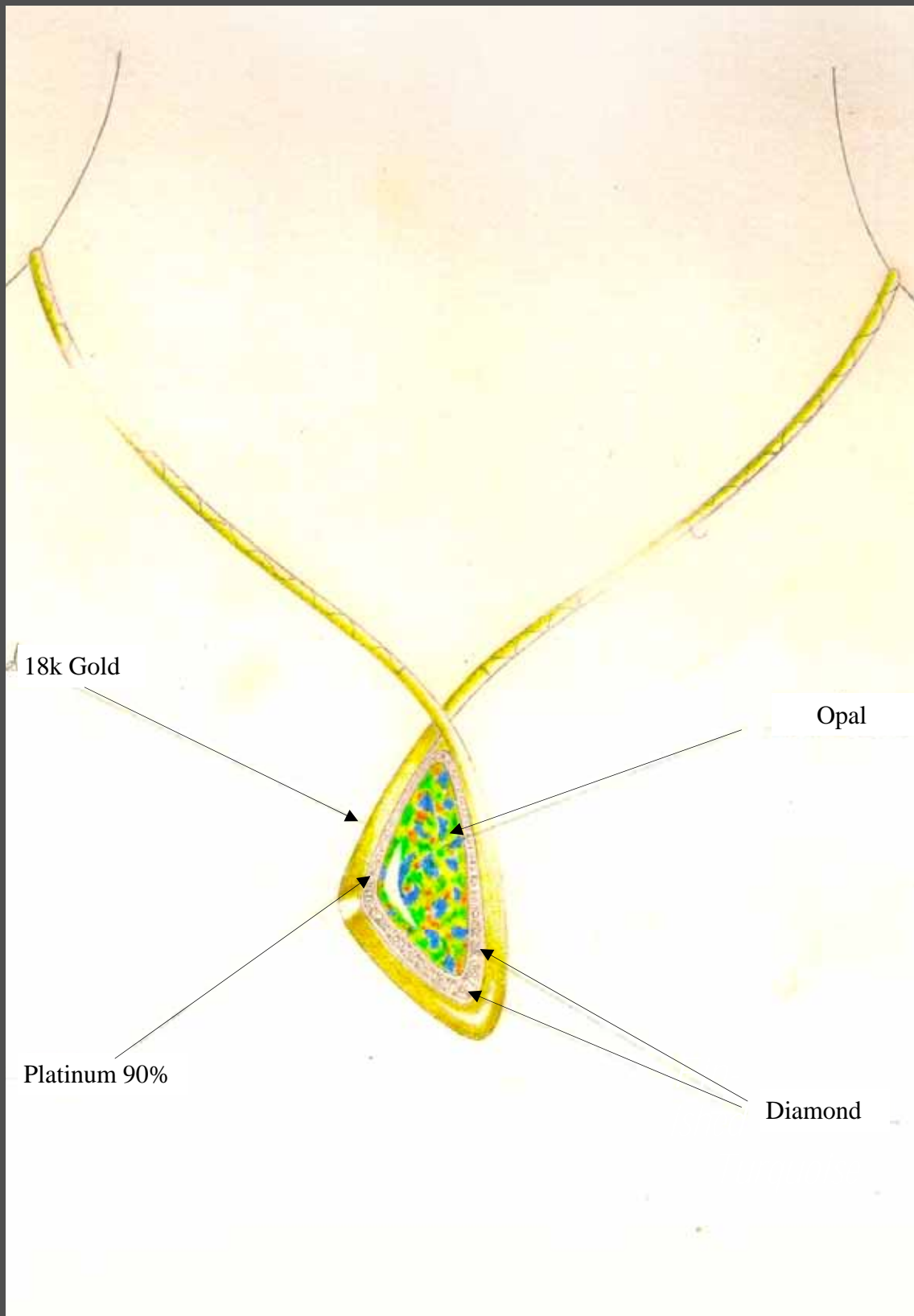




*Design for opal pendant
18k gold, opal, cultured pearl and diamond*



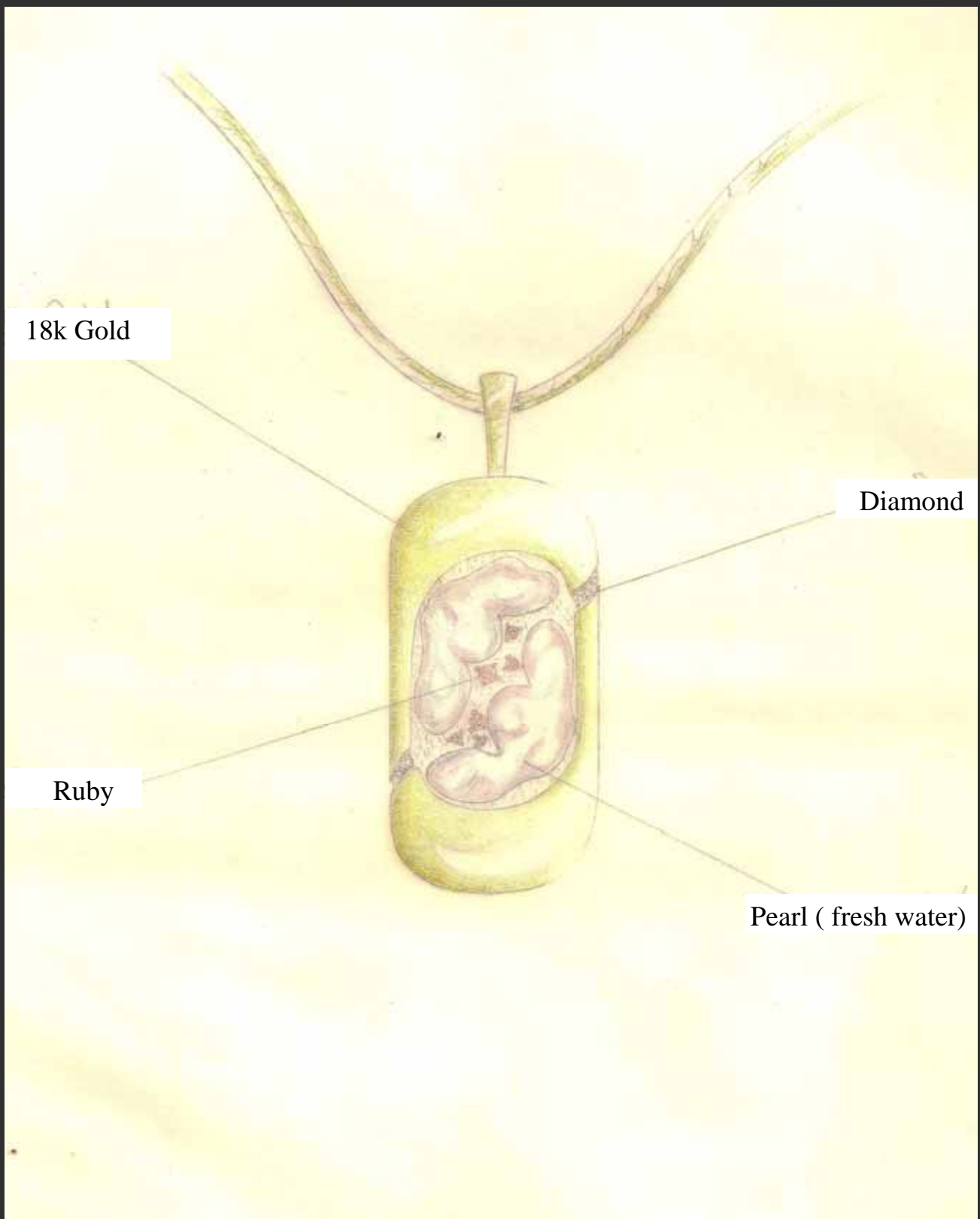
*Finished Pendant
18k gold, opal, cultured pearl and diamond*



*Design for opal pendant
18k gold, opal, platinum 90% and diamond*



*Finished Pendant inspired by previous design
18k gold, opal, platinum 90% and diamond*



18k Gold

Diamond

Ruby

Pearl (fresh water)

This design was conceived after purchasing a single pearl which had the feeling of birth, innocence and purity. It wasn't until four years later that I managed to find another pearl which matched the first perfectly, allowing the essence of the universal yin yang symbol to manifest through the piece.



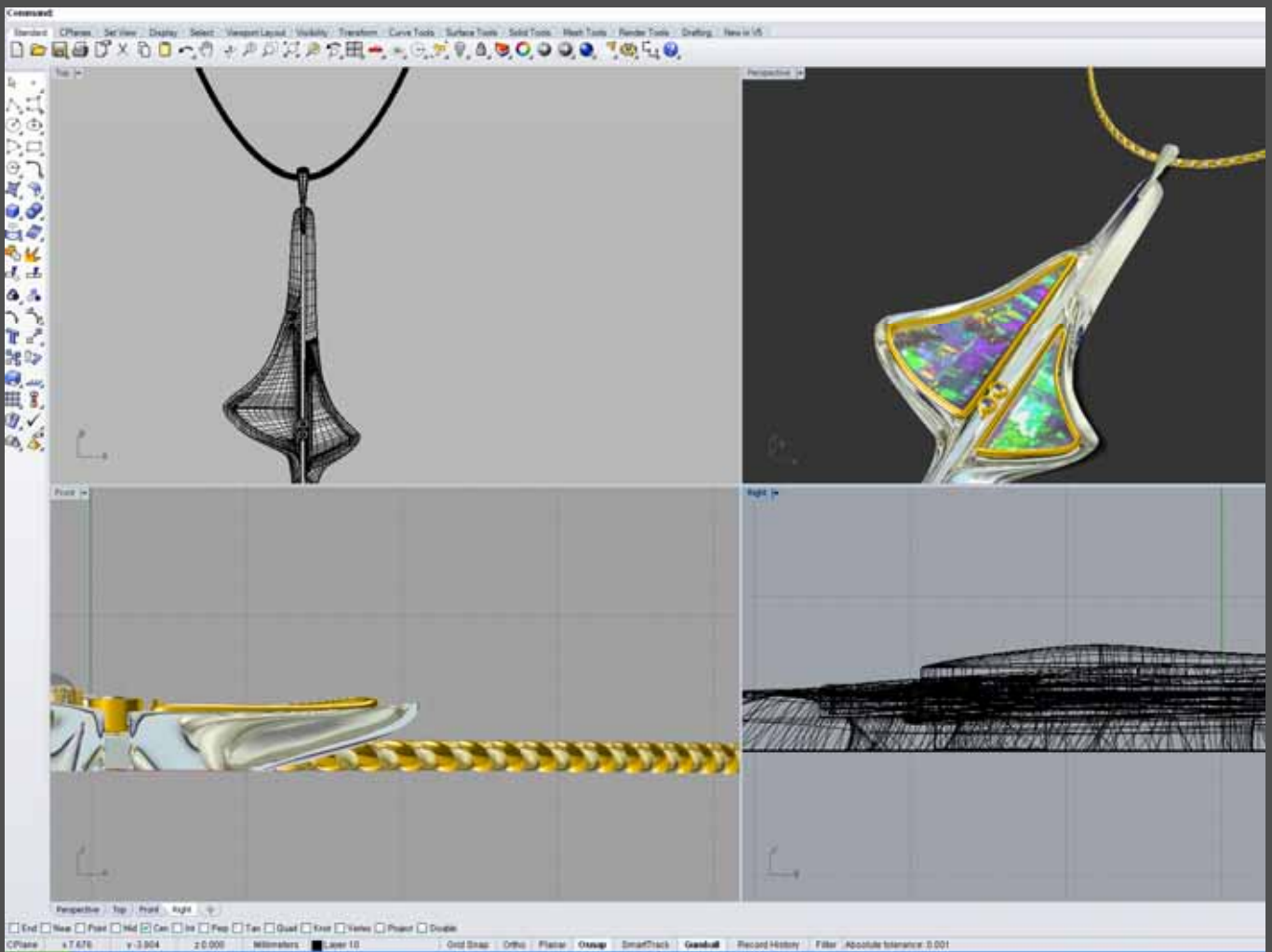
*Finished pendant
Japanese Freshwater pearls, 18k gold.
Platinum 90%, ruby and diamond*



Original Paper design, made into turquoise and 18k ring then design is modified to produce an opal and diamond ring



With the advent of computer assisted drawing techniques it is now possible to design jewellery that is so realistic that it is almost impossible to know it from the true manufactured object.



The following pages show some of my computer assisted designs and in some cases the resulting jewellery



computer drawing of a pendant
design for silver, gold and paua.



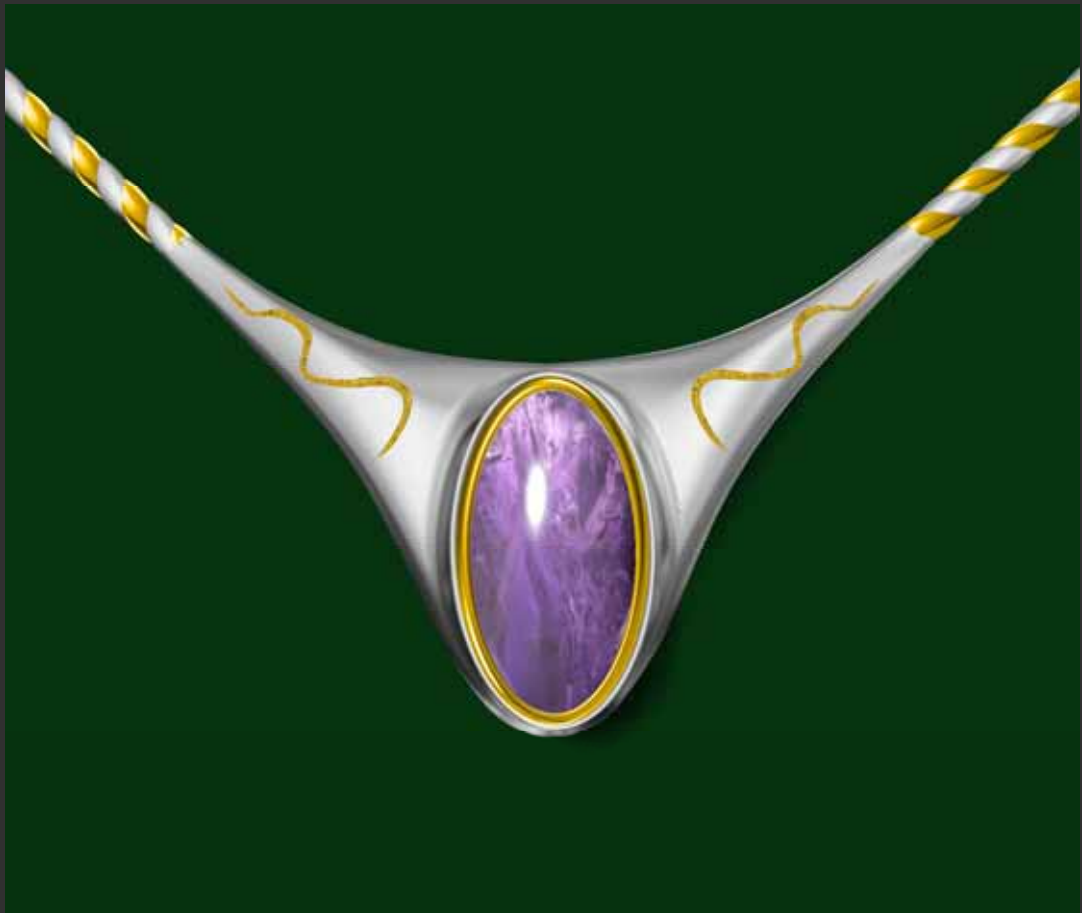
Photo of finished pendant in silver, 24k & 18k gold, paua



computer assisted drawing of design
for opal pendant in white & yellow
gold, ruby and diamond.



Another view with different
combination of materials



Design above and finished pendant below

Amethyst, STG, 24k Gold





Ring design with 2 views
using different combination of materials



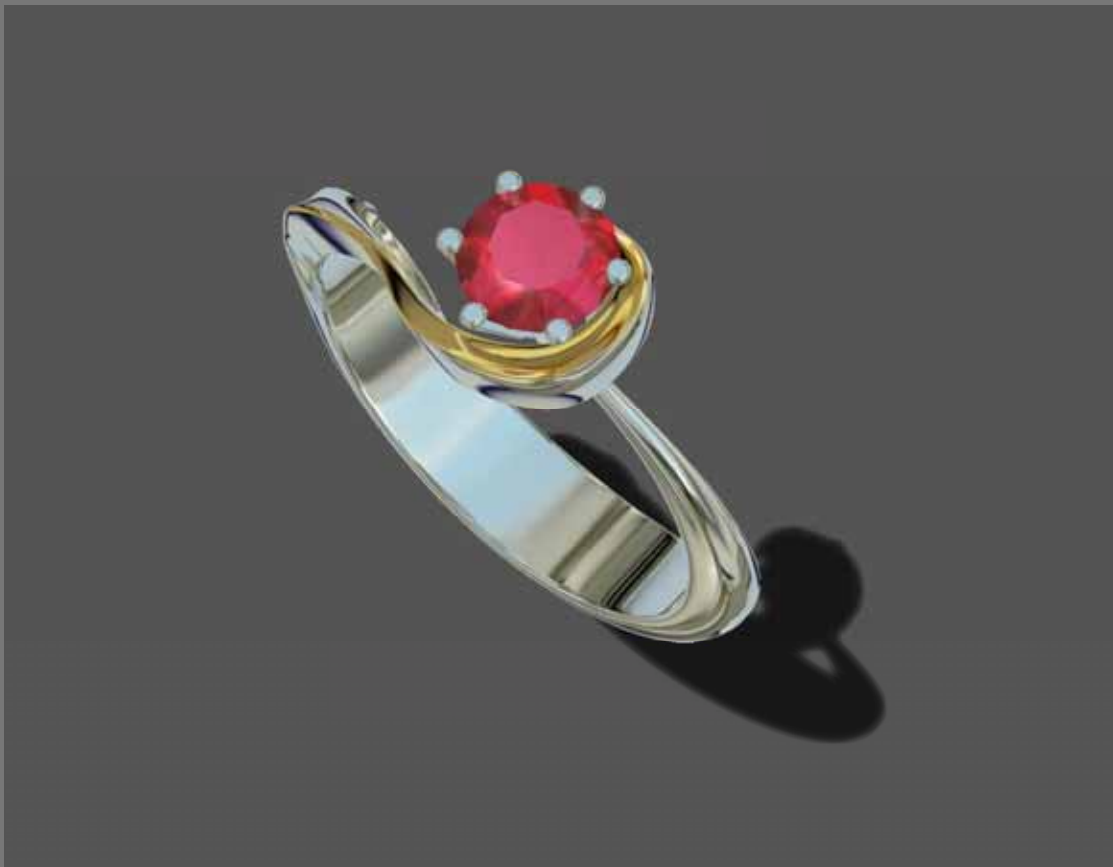


designs for
wedding rings





Engagement ring designs





Engagement ring designs





Brian Dodds

91 Central Takaka Rd
Takaka, Golden Bay 7183
Nelson Bays, New Zealand

03 525 9904

doddsbr@quik.co.nz

Facebook: 'Brian Dodds jewellery'